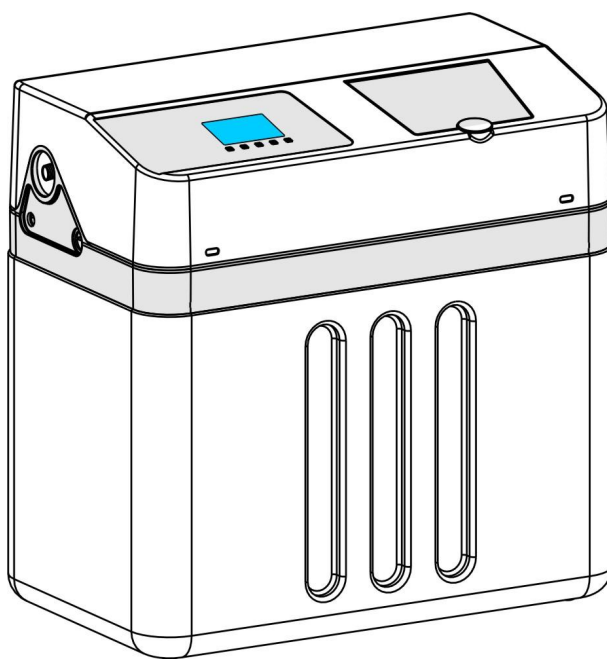


JY617、JY635

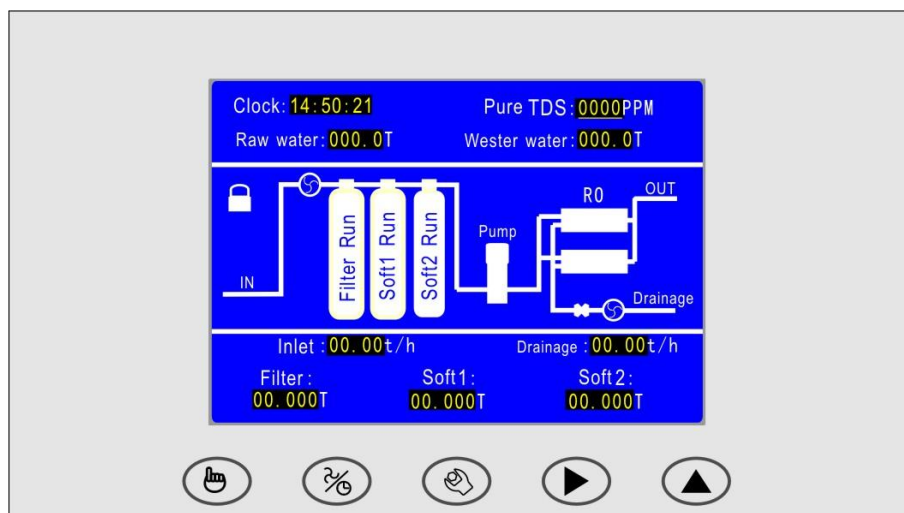
WHOLE-HOUSE WATER PURIFIER



Scan Qr code for the latest



I Controller display and operation



Pic1 : Control panel

The operation button:

☞: Manual switch(Forced backwash); ⚙: Parameter setting; ⌛: Mode switch;

▶: Move to the next digit; ▲: Plus 1

A、Unlock: Press "▶" & "▲" buttons at the same time, The key is unlocked, Displaying "🔒" disappear

B、Lock: Automatic lock after 3 minutes without any operation.

C、"⌛" Mode switch: Unlock state, the operation button in time mode "🕒" and meter Mode "🌀" display to switch between.

D、"☞"

Manual switch: Unlock state, when pushing the button the valve(below ▽) switch to next station. As shown in the figure, the **Filter Run** (filter valve) enters the **Filter B.wash** → **filter Wash**. Press the "▶" button, "▽" move to the **Soft1 Run**, Press the "☞", switch the **Soft1** valve to enter the **Soft1 Regen** and **Soft1 wash** . Cycle in turn.

Forced backwash: Press "☞" button 6 times under the locked state, filter, soft1, soft2, enter backwash、Wash、Run → Regen、Wash、Run→Regen、Wash、Run.

E、"⚙"Parameter setting: Unlock state, press the button and the screen will show the interface of setting parameters.

(2) Service display:

A, **Clock:** 14:50:21: Delay backwash function must be set.

B, **Pure water TDS: 0000 PPM** Shows the TDS of pure water, unit PPM

C, **Raw water: 0000.0T**: Measured by the water inlet flow meter, including all the softening water flowing out of purifier, **B.wash** and **wash** drainage, subsequent RO membrane purified water and RO drainage. Inlet flow meter symbol "🌀" rotates when water flows through it.

D, **Weste water: 0000.0T**: Total production of water, the unit is tons, by the RO drainage flow meter measurement. drainage flow meter symbol "🌀" rotates when water flows through it.

E, **Inlet : 00.00t/h**: Flow rate of inlet water.

F. **Drainage:00.00t/h**:RO drainage flow rate.

G, **Filter: 00.000T; Soft1: 00.000T; Soft2: 00.000T** Respectively display the **Filter** valve, **Soft1** valve, **Soft2** valve current station parameters, decline state, to "0" automatic to shift next station.

H. **filter Run**、**Soft1 Run** and **Soft2 Run** Respectively show that the filter valve, soft1 filter valve and soft2 valve are in the "Run" state. If one of these position is blank, it indicates that the position is missing one valve, or the connection of the valve is fault.

(3) Red band display



Pic2 : Red band display

The red band at the top of the screen shows the working state of the purifier at intervals, such as "pure water tank is full, high pressure pump stop", "low water pressure, high pressure pump stop."

(4) Parameter setting (Default Parameters is under raw water hardness 5mmol/L)

Push "▶ & ▲" To unlock (🔒 disappear)

Push ⏸ to Setting interface

Push "⏸" To next page

Push "⏸" To conform and exit
Pic3 : "⏸" 617 Parameter setting

Push "▶ & ▲" To unlock (🔒 disappear)

Push ⏸ to Setting interface

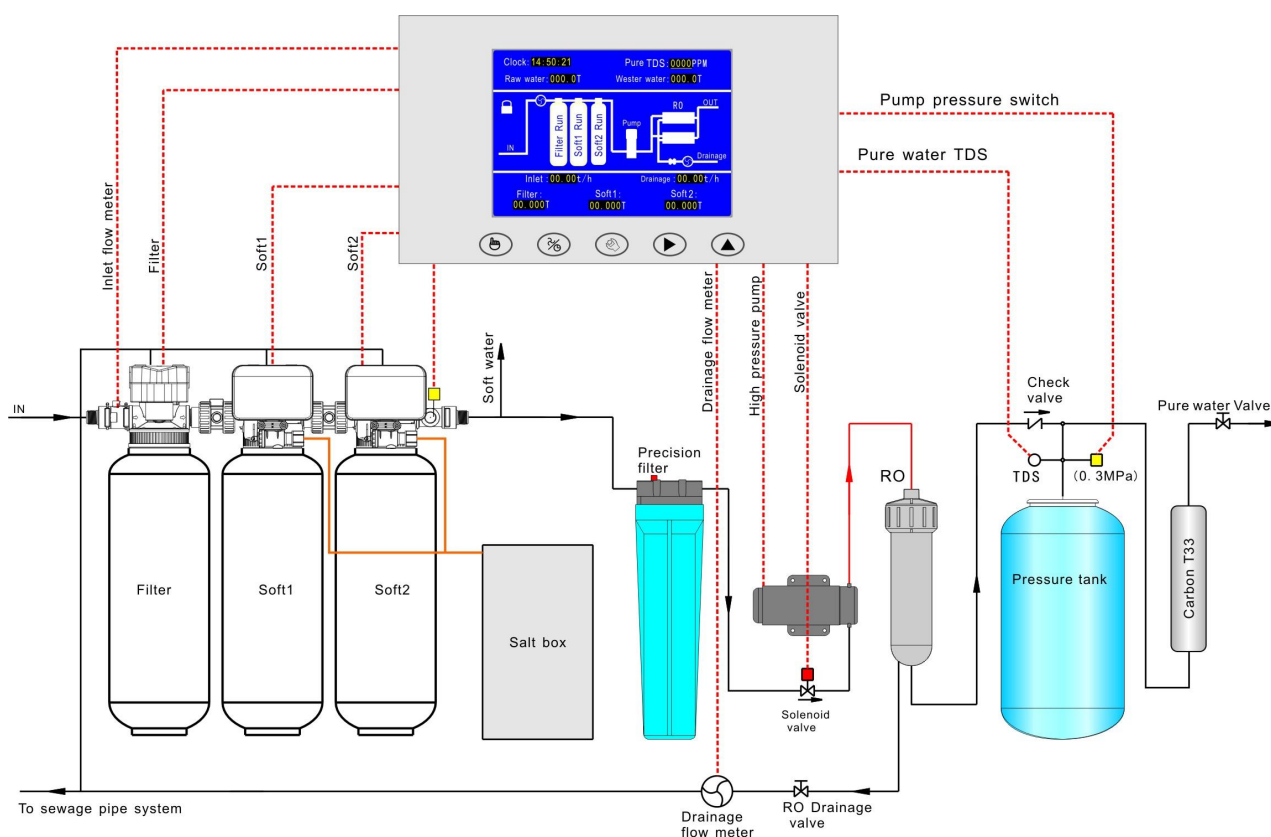
Push "⏸" To next page

Push "⏸" To conform and exit
Pic4 : "⏸" 635 Parameter setting

Parameter setting description:

1. The program default parameter is suitable for raw water hardness 5mmol/L, suitable for most occasions, generally do not need to modify.
2. In order to ensure constant water use, the default setting is "delay backwash". 03:00 is the time when water is least commonly used. When any of the filter, soft1 and soft2 valves, the "Run" parameter decreases to "0", wait until 3am to switch to backwash or regenerate. Parameters of filter, soft1 and soft2 valves are in the form of lists, the digital of Regen below Filter is backwash, below Soft1 or Soft2, is brine absorption → Slow wash, Wash is Wash + water refill.

II Schematic diagram of operating principle



Pic5 : Schematic diagram of operation principle

III. Debugging

(One-click operation)

Forced backwash mode:

Press "☺" button 6 times under the locked state, *filter*, *soft1*, *soft2*, and enter *backwash*, *Wash*, *Run* → *Regen*, *Wash*, *Run* → *Regen*, *Wash*, *Run*, the purpose is to filter tank water injection and exhaust, resin tank water injection and exhaust, salt tank water injection, filter material cleaning, resin cleaning, after the end of pretreatment, precision filter water injection, water pump and RO membrane system water injection, Until the pressure of the pure water system rises, the low pressure switch is closed, and the high pressure pump is working. Preparation of pure water begins.

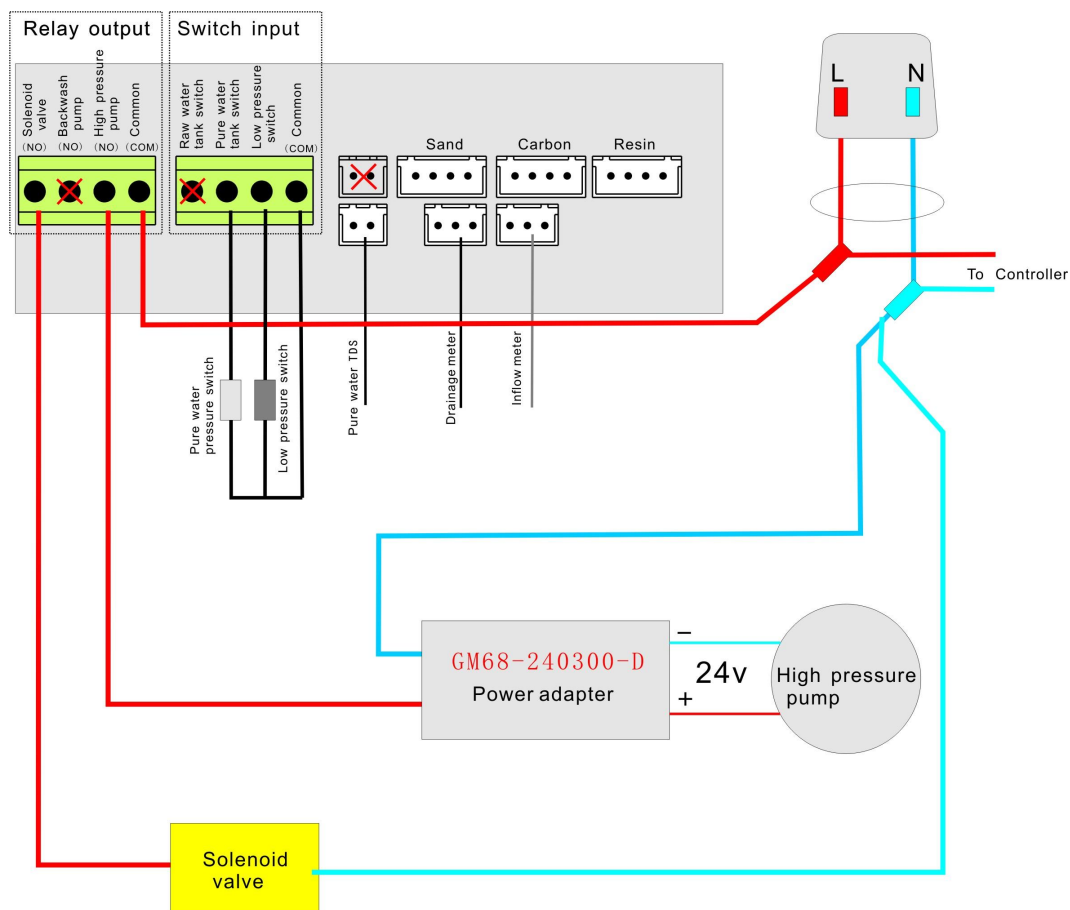
Note: Factory setting: pure water pressure 0.3MPa automatic closing, pure water volume of about 3 liters. The factory setting value of the lower pressure switch is 0.02MPa.

IV. Installation

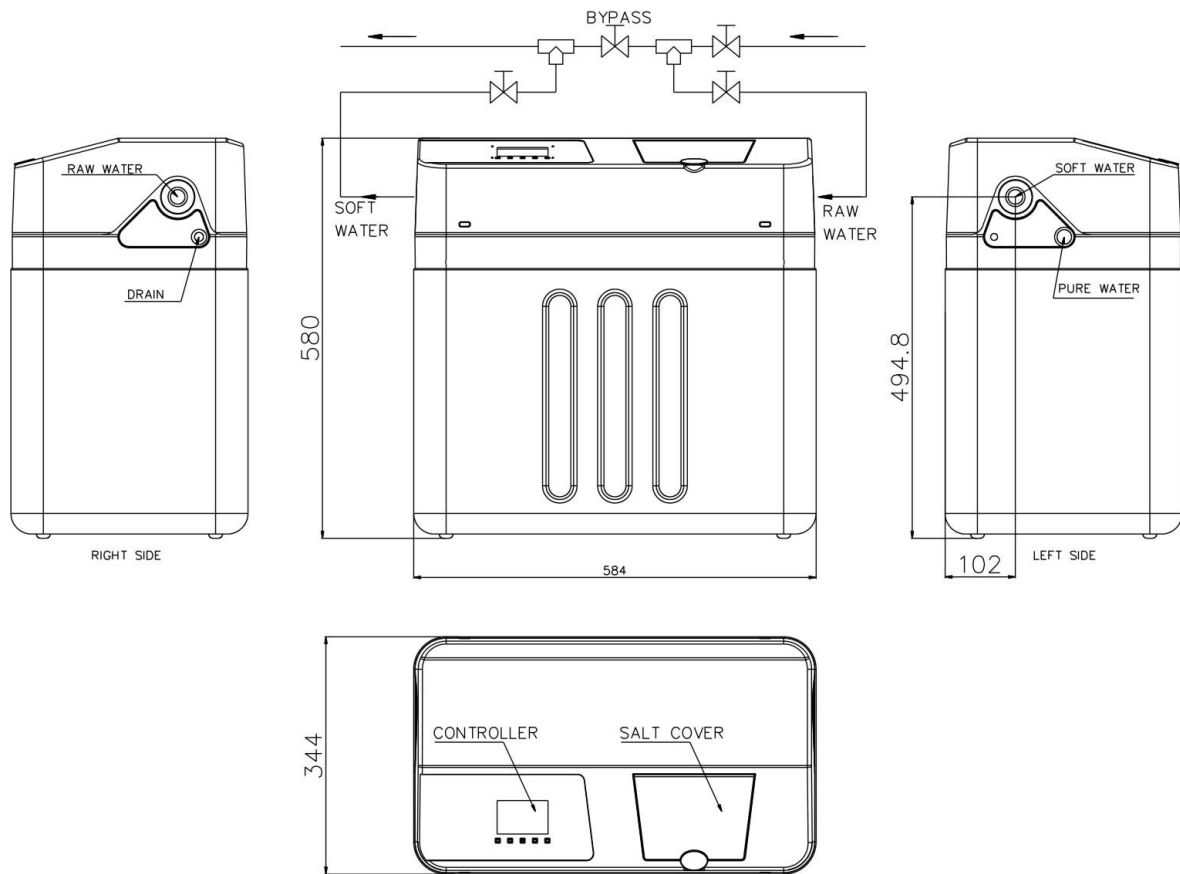
Installation precautions:

1. The drainage main pipe of the water purifier shall be reliably connected to the indoor drainage pipe, and the floor drain shall be set around it.
- 2 Water inlet temperature ranges from 0°C to 45° to avoid humid environment.

V. Installation Control electrical connection diagram and geometry size

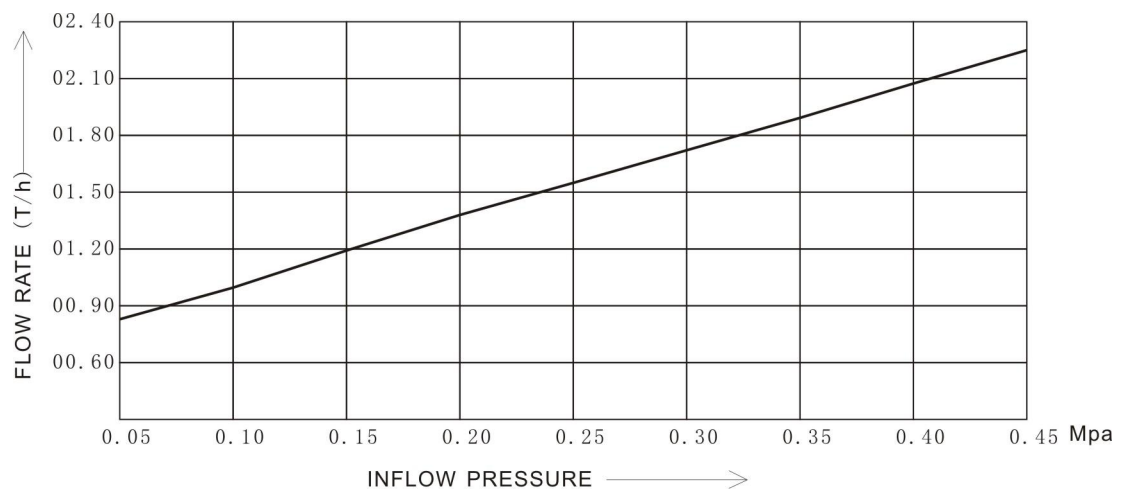


Pic6:Control electrical connection diagram

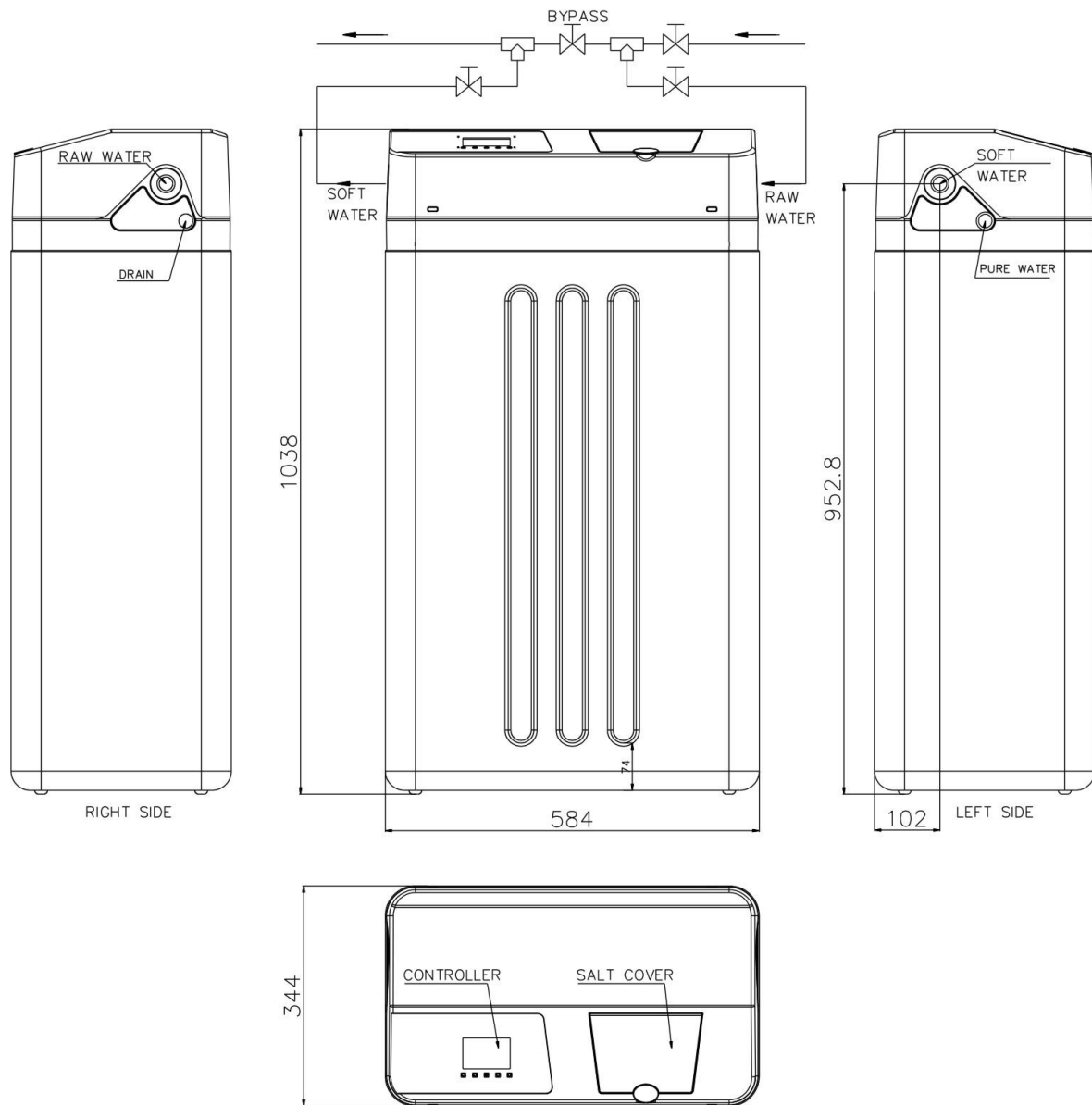


Pic7: JY617 Installation dimensions of water purifier

VI Soft water flow rate pressure curve

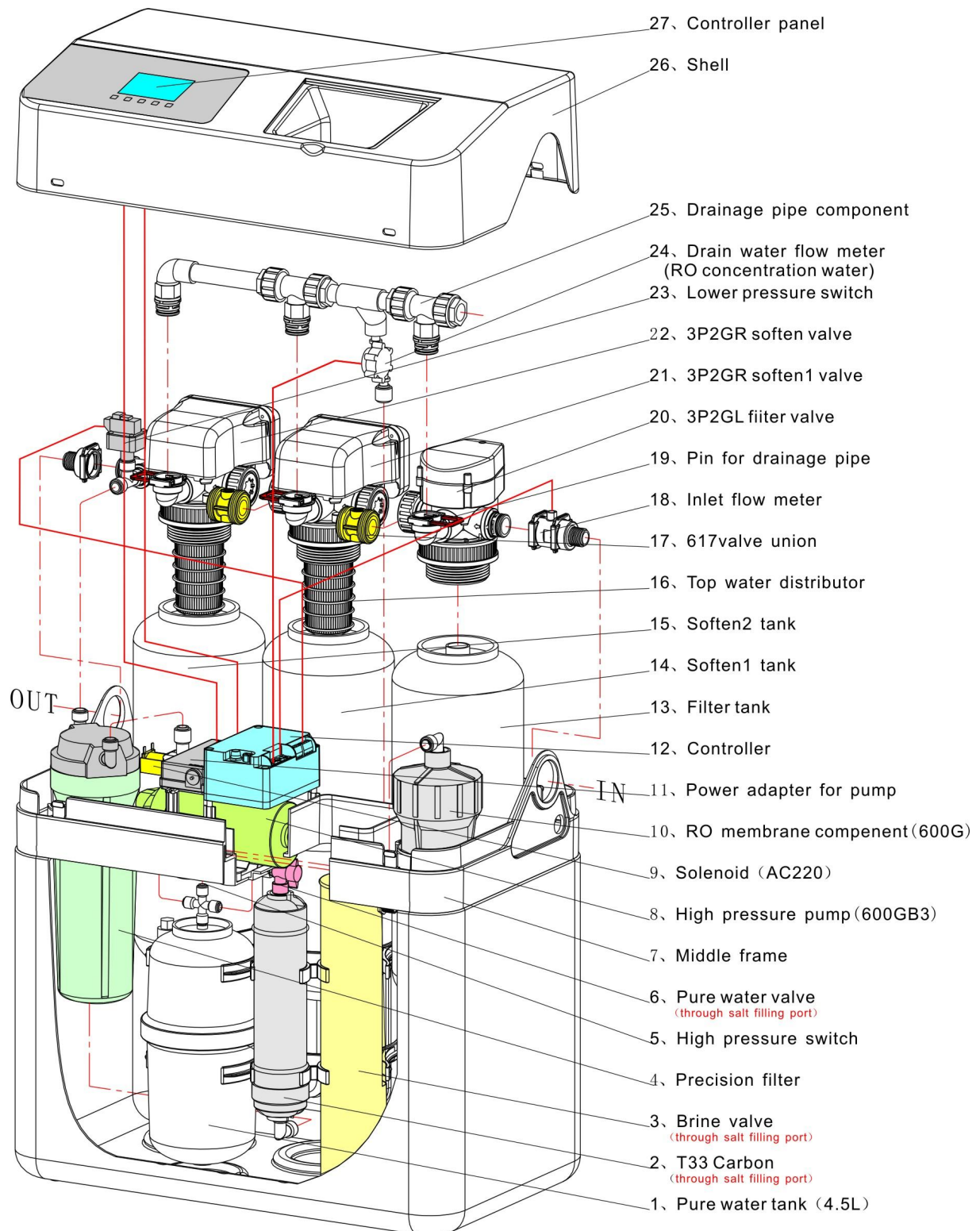


Pic8: Soft water flow rate pressure curve



Pic9: JY617 Installation dimensions of water purifier

VII Component and disassembly



Pic10:Component and disassembly

Appendix

JY617 Filter material and auxiliary list

Serial	Name	Specification	Number
1	Resin	5L Bag	2
2	Activate carbon	4L Bag	1
3	RO Membrane	600G	1
4	Precision filter core	5 micron	1
5	Pure water tap	3/8"	1
6	Pure water pipe	3/8"×5meter	1
7	IN & OUT Connecting pipe	1/2"×0.6meter	2
8	Sealing ring	1/2"	4
9	Drainage connector	50mmID*20mm	1

JY635 Filter material and auxiliary list

Serial	Name	Specification	Number
1	Resin	5L Bag	4
2	Activate carbon	4L Bag	2
3	RO Membrane	600G	1
4	Precision filter core	5 micron	1
5	Pure water tap	3/8"	1
6	Pure water pipe	3/8"×5meter	1
7	IN & OUT Connecting pipe	1/2"×0.6meter	2
8	Sealing ring	1/2"	4
9	Drainage connector	50mmID*20mm	1